

# Community Emergency Response Team



Department of Homeland Security  
Emergency Preparedness and Response Directorate  
FEMA



*citizen*  *corps*



# CROSSWIND



## Disaster Preparedness Execution

*Organizing at the Neighborhood Level*

# Neighborhood Preparation Plan



Two Parts to this briefing:

- Why we should get ready
- How to do it

# What and Why am I doing this?

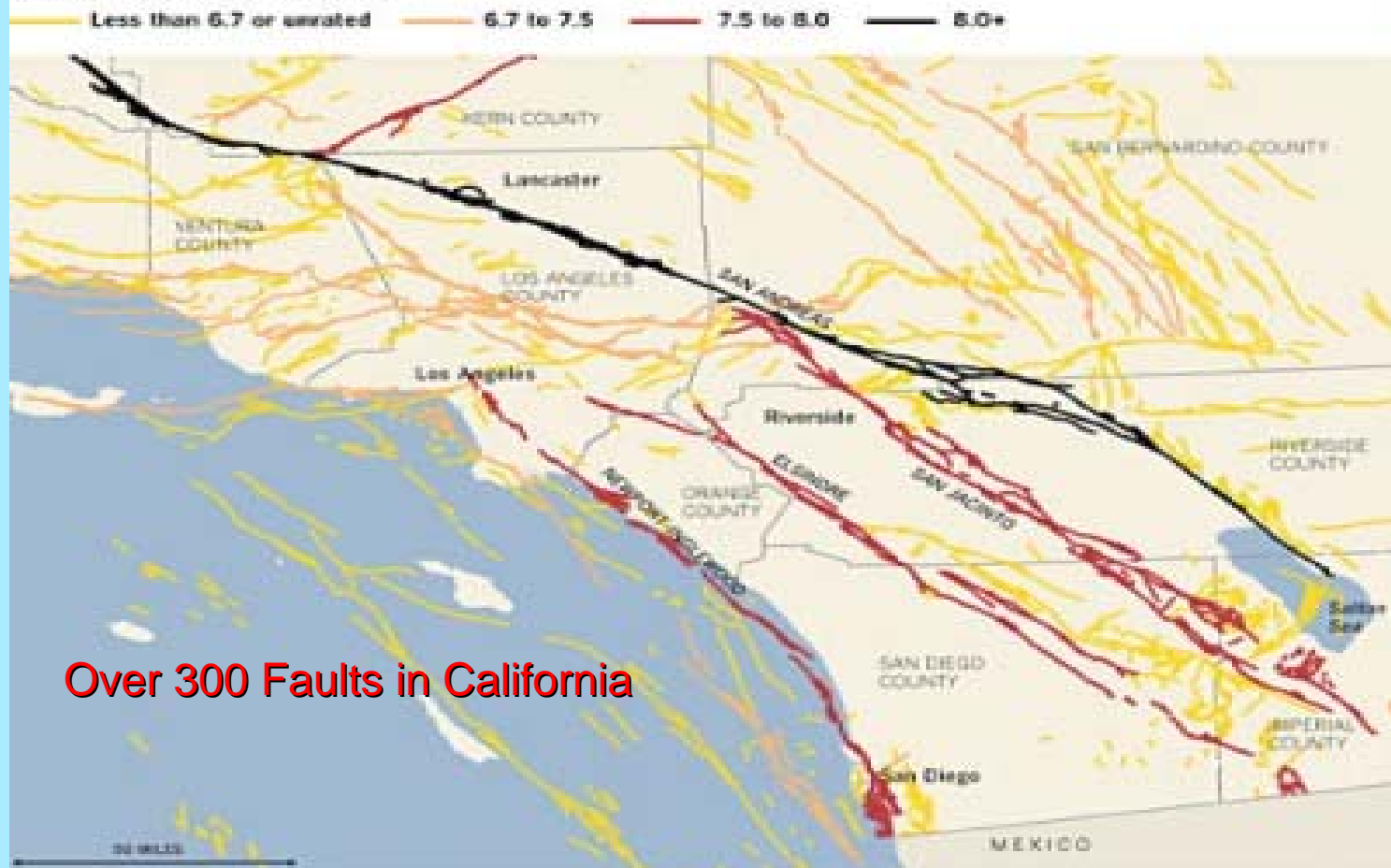


- What is CERT?
  - ✦ Community Emergency Response Team
  - ✦ 8 training sessions to provide basics in
    - *Shelter, First Aid, Search and Rescue, Organizing*
- CERT Goal = Neighborhood Self Sufficient
  - ✦ Disaster Prep is about eliminating fear
  - ✦ Make this a Team Sport
  - ✦ Don't want you to come to my house because it is the only one with supplies

# Major Faults affecting Orange County



The region's most populous areas are crisscrossed by faults capable of delivering jolts of magnitudes equal to or greater than the 1994 Northridge earthquake, which measured 6.7. Below, the latest fault map released by the California Geological Survey is coupled with earthquake scientists' estimates of the maximum magnitude of potential quakes on those faults.



Sources: United States Geological Survey, California Geological Survey, Uniform California Earthquake Rupture Forecast, Southern California Earthquake Center  
Graphics reporting by Dana Barral, Thomas Don Lathan



# Prediction for California



- 6.7 or Greater = 99 % in next 30 years\*
- 6.7 or more in greater LA area = 67 %
- 7.5 or more = 46 %
  - *Most likely in Southern California*

23% of quakes above 3.5 in US are in California

\*Science Daily 5/15/08

# History of the “Big One”



- San Andreas Fault- has a major earthquake averaging every 137 years.
- Last earthquake was 150 years ago (7.9)

# Our Likely Situation



- Per Irvine City Engineer:  
2 Likely Scenarios

1) San Joaquin Hills Fault 6.8 – 7.3

*Close to us: lots of damage but help nearby*

2) San Andreas Fault- 7.5 - 7.9

*Further Away: lots of infrastructure damage*

>Other: Whittier and Puente Hills faults

# Quake Strength



- Summer 2008 Chino Hills was 5.4
  - Recall what the force of that felt like
- What multiple would start to worry you about the next one?

10 x, 100 x, 200 x ??

>>> 2000 times greater

# What will be our Condition?

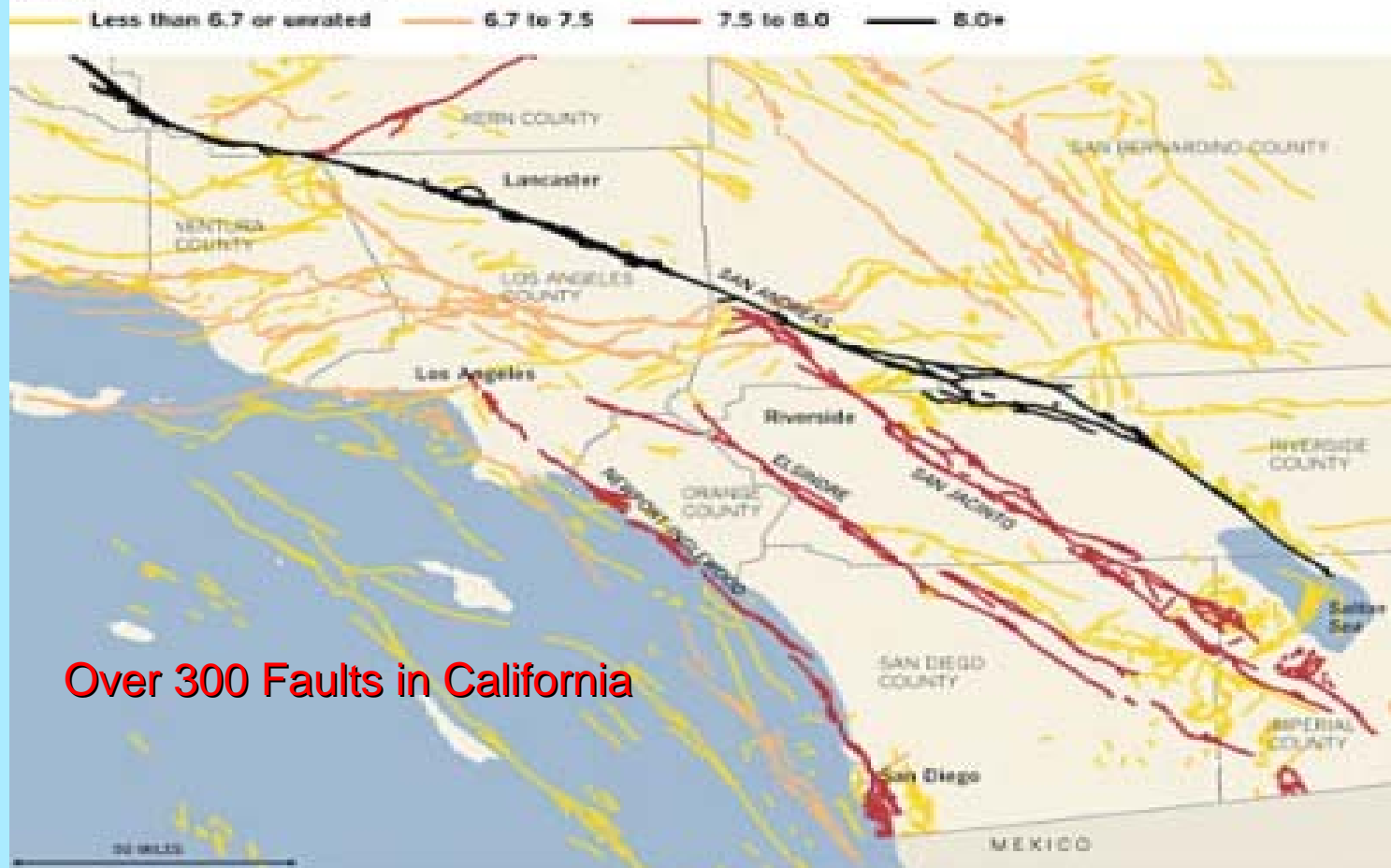


- Gas, Phones, Water, Electricity will be off

# Major Faults affecting Orange County



The region's most populous areas are crisscrossed by faults capable of delivering jolts of magnitudes equal to or greater than the 1994 Northridge earthquake, which measured 6.7. Below, the latest fault map released by the California Geological Survey is coupled with earthquake scientists' estimates of the maximum magnitude of potential quakes on those faults.



Over 300 Faults in California

Sources: United States Geological Survey, California Geological Survey, Uniform California Earthquake Rupture Forecast, Southern California Earthquake Center  
Graphics reporting by Dana Barral, Thomas Don Lathan

# What will be our Condition?



- Gas, Phones, Water, Electricity will be off
- Will you be at work or at home?
- Roads may be impassable
- Cabinets and bookcases down
- Windows and glass broken
- If at night, do you have flashlight and shoes under the bed?

# Conditions ?



- Emergency Services can't get in-
  - **We will be on our own**

Won't help come?

- **NO- they will be at hotels, schools, etc.**
- Ratio of EMS / residents = 1 : 2500
- Do you have enough supplies to live for two weeks on your own?
- Can your neighbors help each other?

# Can You:



- Drop, Cover and Hold?
- Put fire out?
- Shut off the gas?
- Shut off water?
- Shut off the electricity?

**Who is home to do this??**

# Where Do We Start ?



- From the inside out:
  - Get your home ready
    - ✦ Supplies, Food, First Aid
    - ✦ Secure heavy items
    - ✦ Family Disaster Plan
  - Use lists available

# An Effective Way to Prepare



- Bite size steps
- Get the block together and help each other
- Secure furniture day
- Utility shutoff training day
- Supplies buying trip one weekend
- Teams for Action Items

# Action Items



- Utility Shutoff
- Car Kit / Under Bed Bag
- Secure the House Day
- Supplies
- First Aid Kits
- Skills List and Contact lists
- Documents / Financial
- Equipment / Communications
- Water and Food

# Handouts



- “Putting Down Roots in Earthquake Country”
- Supplies List
- Equipment List
- Invite Letter
- Vendor List

# Next Steps



- Build list of things to do
  - √ (Done)
- > Do Action Item # 1- Utility Shutoff Training
- Set up Teams:
  - Divide the Work / Manageable
  - Get Volume Discounts
- Who can Assist ?
- Next gathering is: ???? Date????

# Think of it this way



- The thought has always been there to get ready.
- Do it and get peace of mind knowing you are ready.

# Sample Training Manual



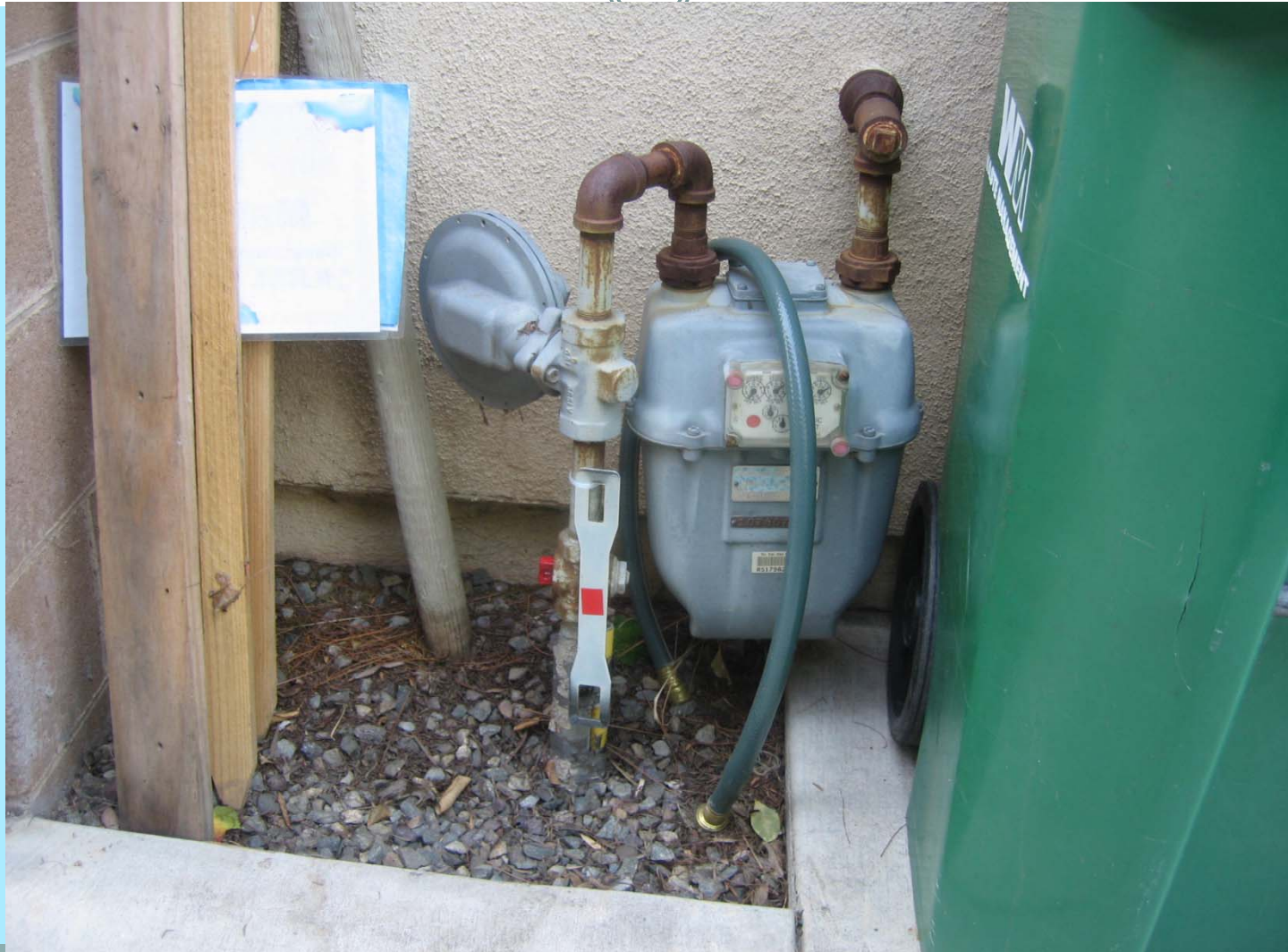
# Photo 1 (Automatic Shutoff Valve)



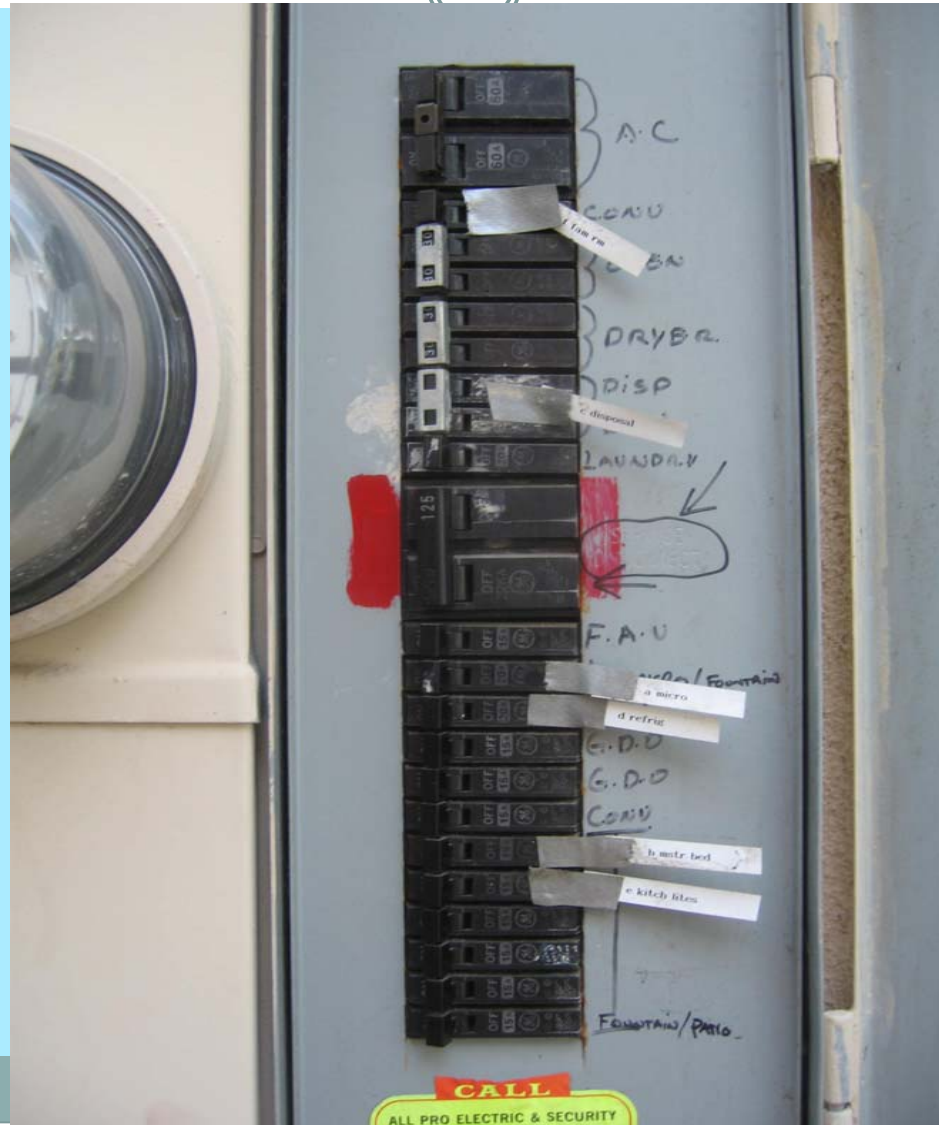
## Photo 2 (Valve difficult to find)



## Photo 3 (Valve painted with wrench attached)



# Photo 4 Electricity Breakers



# Photo 5 Water Shutoff



# Under Bed Bag



- In a bag that can be opened in the dark
- Secured to the bed

• 1 pair shoes	N/A	
• Flashlight	\$5.00	
• Whistle	1.00	
• Lightstick	1.00	
• Cost		\$ 7.00

